



Mayo Clinic : The Past

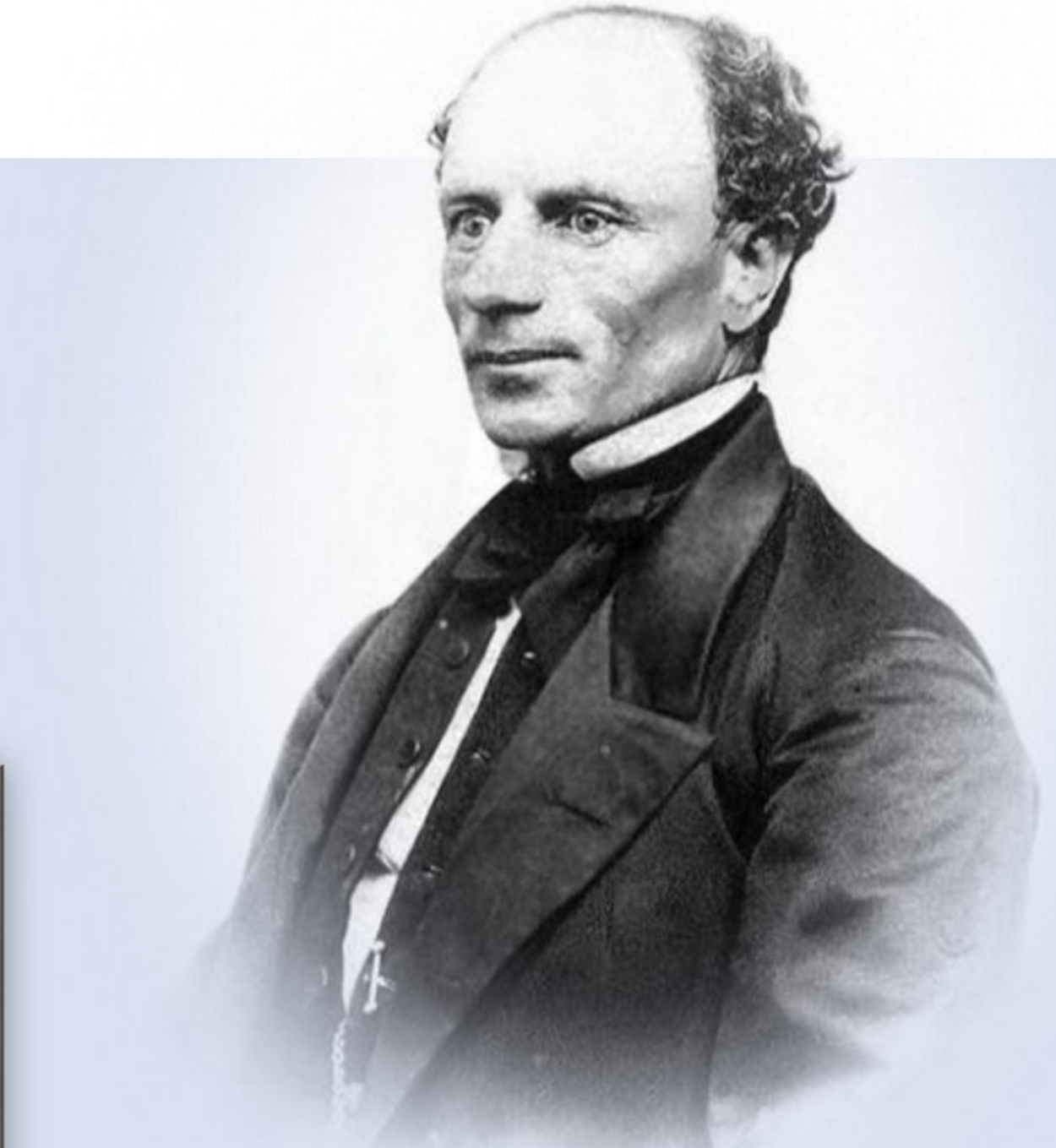
Tanios Bekaii-Saab, MD ,FACP
Professor , Mayo Clinic College of Medicine and Science
Consultant, Mayo Clinic AZ
Chair , ACCRU Consortium



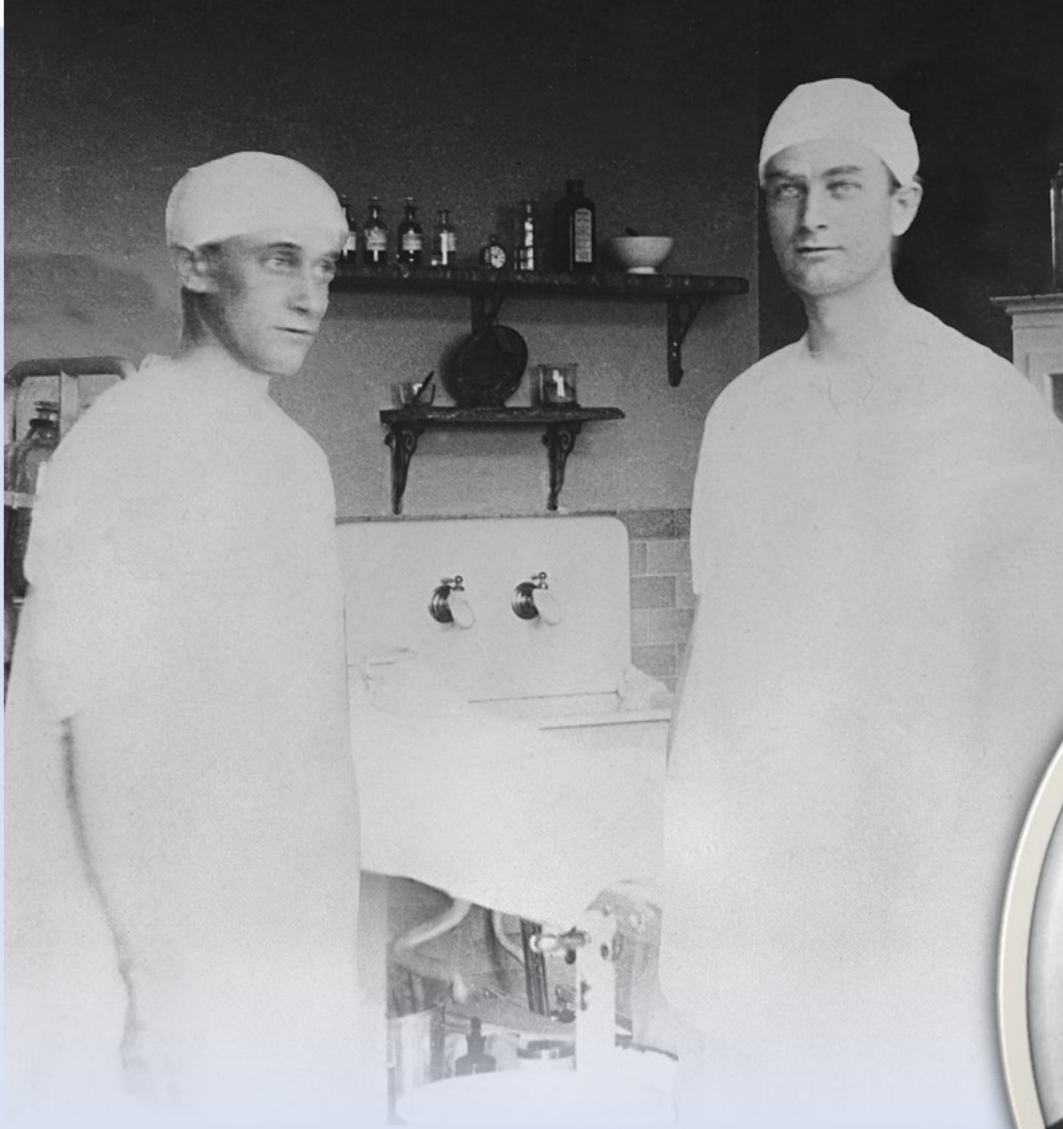
Late 1863

Dr. William Worrall Mayo came to Rochester to examine new recruits for the Union Army. He moved his young family to Rochester in 1864.

As his medical practice grew Dr. Mayo and his wife, Louise, mortgaged their home to purchase a microscope so Dr. Mayo could provide optimal care to his patients.



Dr. Mayo's sons, Charles H. and William J., joined him in practice after finishing medical school.



1883 ▶

A devastating tornado struck Rochester, Minnesota.

Dr. W.W. Mayo called on the Sisters of St. Francis, a Catholic teaching order, to assist in providing medical care to the injured.



1889

Saint Marys Hospital opened with 27 beds. Word spread of the “hospital in the cornfield” and the skill of the Mayo brothers as surgeons.



The Mayo brothers worked closely with the Franciscan Sisters, employing the latest antiseptic techniques in surgery. In 1906, to address the need for more nurses, the Saint Marys School of Nursing was established.

1889

Saint Marys Hospital opened with 27 beds. Word spread of the “hospital in the cornfield” and the skill of the Mayo brothers as surgeons.



The Mayo brothers worked closely with the Franciscan Sisters, employing the latest antiseptic techniques in surgery. In 1906, to address the need for more nurses, the Saint Marys School of Nursing was established.

1906

Visiting physicians organized
The Surgeons Club, forerunner
of Mayo School of Continuous
Professional Development.



1907

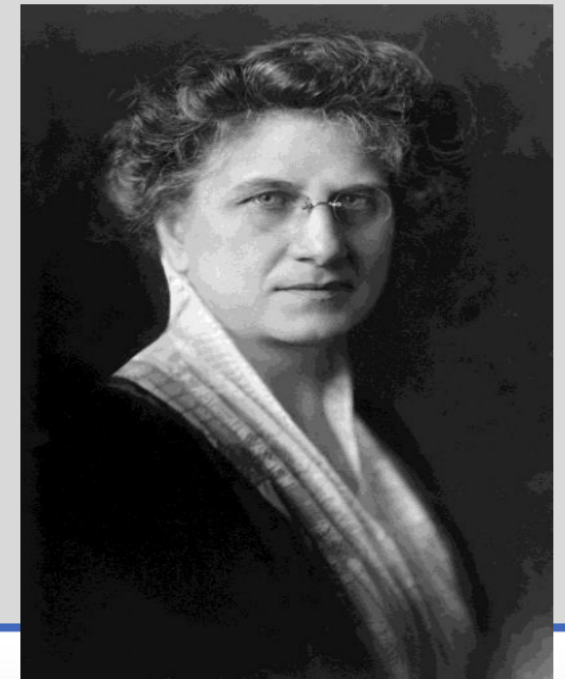


◀ **Henry Plummer, M.D.**

introduced the concept of integrated medical records for individual patients stored in a central place. The unified medical record continues today in an electronic format. It is the “gold standard” of documentation for patient care, research and education.

Maud Mellish ▶

was hired to develop a library and perform editorial services for the staff.



1955

Unprecedented growth of the Clinic prompted construction of the Mayo Building. The 10-story building was completed in 1955.

An eight-story addition was completed between 1966-1970.





1986

Mayo Clinic expanded to Jacksonville, Florida.



Mayo Clinic logo - 1986

2008

Mayo Clinic opened a new 214-bed hospital on the Jacksonville campus.





1987

Mayo Clinic expanded to **Scottsdale, Arizona.**



1998

Mayo Clinic Hospital
opened in Phoenix, AZ.



2011



The Mayo Clinic Care Network was formed to extend Mayo's expertise and resources to health care organizations around the world.

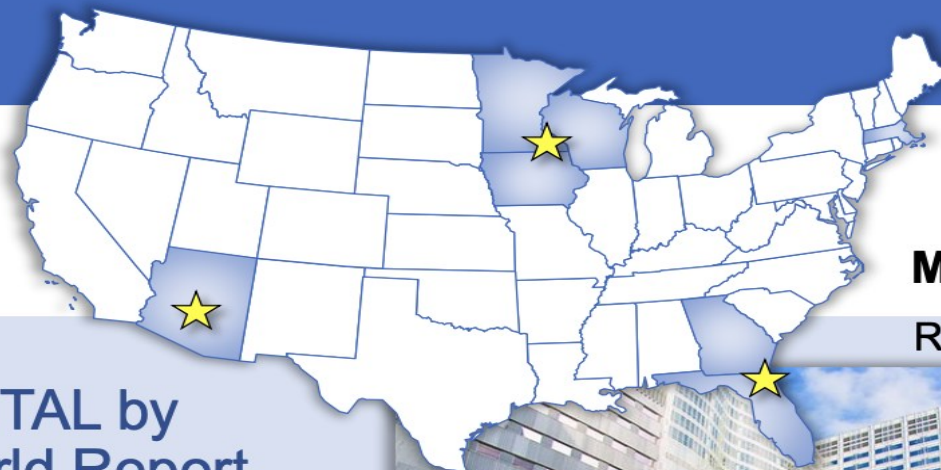


Altru Health System, Grand Forks, N.D.

Mayo Clinic, Altru Health System enter contractual affiliation, first member of the newly formed Mayo Clinic Care Network



Mayo Clinic Today*



MAIN CAMPUSES

Rochester, Minnesota

#1 RANKED HOSPITAL by
U.S. News & World Report

5 SCHOOLS

4,270 RESEARCH
PERSONNEL

76,000 EMPLOYEES

1.4 million UNIQUE PATIENTS
from every state
& 130 countries



Phoenix/
Scottsdale,
Arizona



Jacksonville, Florida

Thank You