



Commission-led NEB Lab projects



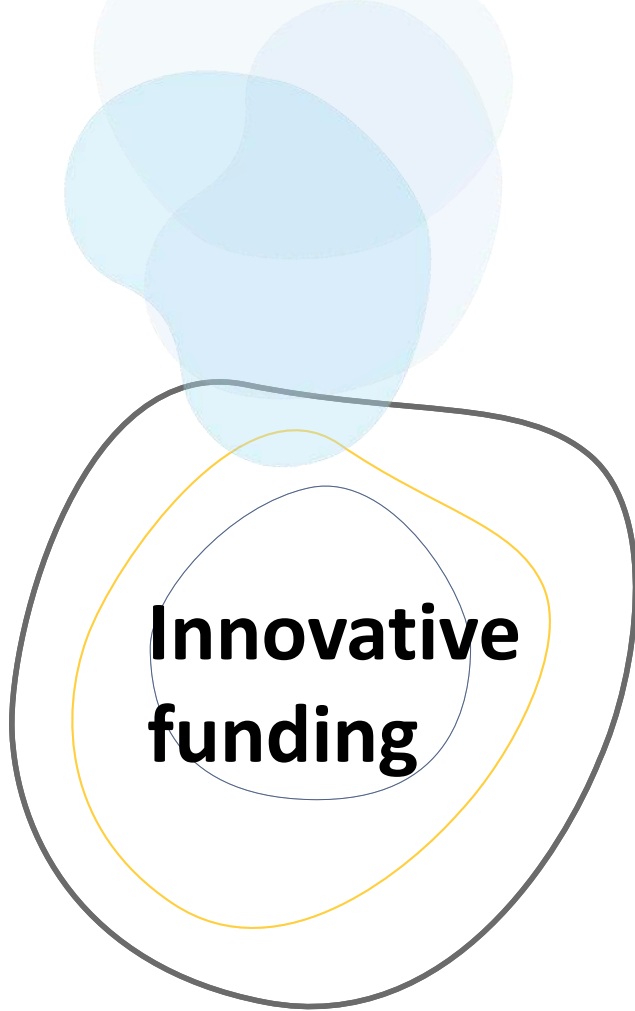
Transformation of places of learning

Collects and **connects** transformation initiatives, good practices **for future formal and informal learning environments**. Supports the transformation of **physical places** of education, the introduction of new **ways of learning** and the building of **relationship** with the local community.

89 proposals from 22 countries, great diversity in terms of scale, stage of development, and the nature of entities supporting these initiatives.

Call Open until 31.12.2022

[share your project](#)



Purpose:

- Identifying, co-designing and piloting new ways to pool private and public resources in order to direct them where it is most needed in support of NEB transformation projects

Main deliverables:

- **Two draft interim reports for end of June 2022** – the reports are now produced and available for consultation
- The Working Group Members behind this project were given the opportunity to comment on these in the summer months. The reports will soon be finalised and available to the NEB Community and to colleagues within the DGs interested in the subject matter
- Aim: co-design ***a pilot scheme to pool both public (EU funds) with private (philanthropic and crowdfunding) sources of financing*** to support NEB activities in areas and in ways difficult to address with EU funding – for smaller size entities, unable to go through complex EU fund application processes.

Roadmap

- **Autumn 2022:** action plan on deployment of solutions proposed in the reports - need for political endorsement of the way forward





**Thank you for
over 90
contributions!**

New contributions
by 30 November 2022
Find the surveys [here](#)

**Regulatory analysis and
experimentation**

Share your experience
with local to EU legislation
in the built sector

Share an existing report
(study, policy or scientific
paper)



- Since July 2022
 - Evaluation of survey results
 - Identify emerging thematic areas of regulatory challenges
- Autumn 2022 Participatory in-depth workshops on selected regulatory challenges
- 30 November: Next deadline for contributions
- From 30 November 2022 onwards: Screening of new survey contributions and project evaluation



Community-led NEB Lab projects



On-going NEB Lab projects

Nordic carbon neutral Bauhaus

- Project kick-started at the side event of the NEB Festival
- Activities until the end of the year:
 - High-level ministries meeting on wood and architecture (Nov)
 - Policy Forum in Copenhagen (Dec)

NEB goes South

- Phase 1 completed with the project partnership kick-off meeting
- Activities until the end of the year:
 - Series of student workshops
 - Panel debate and project meeting on 13 October in Aveiro

New European Bauhaus of the mountains

- Festival “A window on the NEB - Mountains” organized June in Bolzano
- Activities until the end of the year:
 - Securing funding for the project’s activities



- 2 pitching sessions (May and June 2022)
- 7 project proposals:
 - Engaging in sustainability
 - NEB University / NEB Academy
 - Project Unity
 - Sustainable and beautiful "Home-in-Between" to spread hope
 - New European Bauhaus on the Danube (NEBoD)
 - ECO²-SCHOOLS NEB Lab
 - Female Leadership - Women of the NEB
- Planned pitching sessions:
 - 30 September 2022
 - 28 25 November 2022
- [NEB Lab space on community platform](#)



Thanks !

The NEB Labelling Strategy



The NEB Labelling Strategy is a Commission-led NEB Lab project that will develop **tools to characterise and recognise what makes concrete initiatives New European Bauhaus.**

This objective follows the fundamental idea that **increasing precision and coherence** in the definition can improve the level of understanding, and lead the New European Bauhaus to reach a **higher impact.**



The NEB Labelling Strategy

This Commission-led [NEB Lab](#) project develops tools to characterise and recognise what makes concrete initiatives New European Bauhaus.



A New European Bauhaus Compass

- cover all types of NEB projects
- define the three values and principles to guide the development of projects
- guide the development of generic policy and funding initiatives both at EU level and in the Member States



A series of assessment frameworks

- developed for specific types of projects
- Work with precise criteria and indicators
- Based on existing standards and directives
- Can be declined into (self-)assessment tools, depending on the object and the purpose



The NEB Labelling Strategy

Two streams of work will proceed in parallel:



A New European Bauhaus Compass

- **Participation:** Collecting feedback from the Core Team and other EC colleagues. Testing with the NEB Community still to be planned and designed.
- **Publication:** end of October 2022
- **Next steps:** translation of the Compass in a tool (interactive document, an app,...)



A series of assessment framework

- **Selection of 3 leading experts** (for areas related to 3 values, maybe +1 extra person) and 9 experts for sub-areas is ongoing
- **Planned duration of the project:** 2 years from the kick-off meeting (presumably January 2023 – December 2024)
- **Product to develop:** a self-assessment tool, thus a program or an app

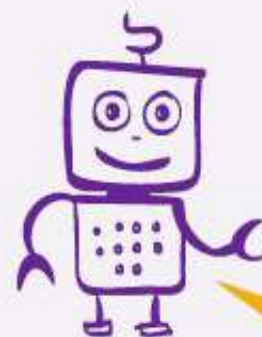


EUROPEAN RESEARCH & INNOVATION DAYS

29
SEPTEMBER
2022

10:00-10:45

New **European Bauhaus**:
collaboration, community and
culture for innovation



Link to register [here](#)

Join this
session

Register
now!

#RiDaysEU



European
Commission

EIT Community New European Bauhaus

6 New European Bauhaus Hackathons

- 20 to 21 Sept.: [Austria](#)
- 29 Sept. & 6 Oct.: [Denmark](#)
- 30 Sept. to 2 Oct.: [Spain](#)
- 4 to 5 Oct.: [Poland](#)
- 3 to 4 Oct.: [Croatia](#)
- 20 to 21 Oct.: [Italy](#)

Innovent Berlin



The poster is split into two vertical panels. The left panel is light blue and contains the EIT Climate-KIC logo, the text 'Co-funded by the European Union' with the EU flag, and the main title 'Building the NEW EUROPEAN Bauhaus' in large, bold, dark blue letters. A large, stylized purple and pink circular graphic is positioned behind the title. At the bottom of the left panel, the tagline 'beautiful | sustainable | together' is written in a smaller font. The right panel is dark blue and features the EIT Innovent logo at the top right. On the right edge of this panel, the text '23/09 | Berlin | 2022' is written vertically in white.

eit Climate-KIC
Co-funded by the European Union

eit INNOVENT
Co-funded by the European Union

**Building the
NEW EUROPEAN
Bauhaus**

beautiful | sustainable | together

23/09 | Berlin | 2022